



«

»

.

«

»

( )

**05.03.05**

( - )

«

»

. / . . ,

«

»

\_\_\_\_\_

,

«\_\_\_\_» \_\_\_\_\_ 2019 .

	.....	<b>3</b>
<b>1</b>	-	
	.....	<b>5</b>
1.1	.....	5
1.2	.....	7
1.3	.....	13
<b>2</b>		
	.....	<b>22</b>
2.1	.....	22
2.2	.....	25
2.3	.....	28
<b>3</b>		
	.....	<b>33</b>
	.....	<b>40</b>
	.....	<b>43</b>

1.

2.

3.

4.

5.

6.

7.

45

8

8

1 -

### 1.1

- ( , , ).

[24].

- 
- 
- 
- 

500

200 400

( 48°38'13" . . 100°01'25" . . ).

. . . 1931 .

[11].

160 . -  
47°11 58 . . 101°29 21 . .

(  
).

500 . .  
705 .

430 . -  
49°58 53 . . 97°07 39 . .

100  
200 . -  
40 .

( 50 °42 45 . . 79°56 29 . . ).

[10].

600 .  
( , , , ),

(51°08 . . 71°26 . . ).

570 .

1,065

340

## 1.2

(

),

24,2

2.

:

,

:

,

[9].

:

•

—

, 71°50 . . 94°45 . .

•

—

, 7°12 . . 80°52 . .

•

—

, 65°35 . . 168°05

..

•

—

-

, 52°24

. . 55°40 . .

83°37 39 . . 32°39 52 . .

9000

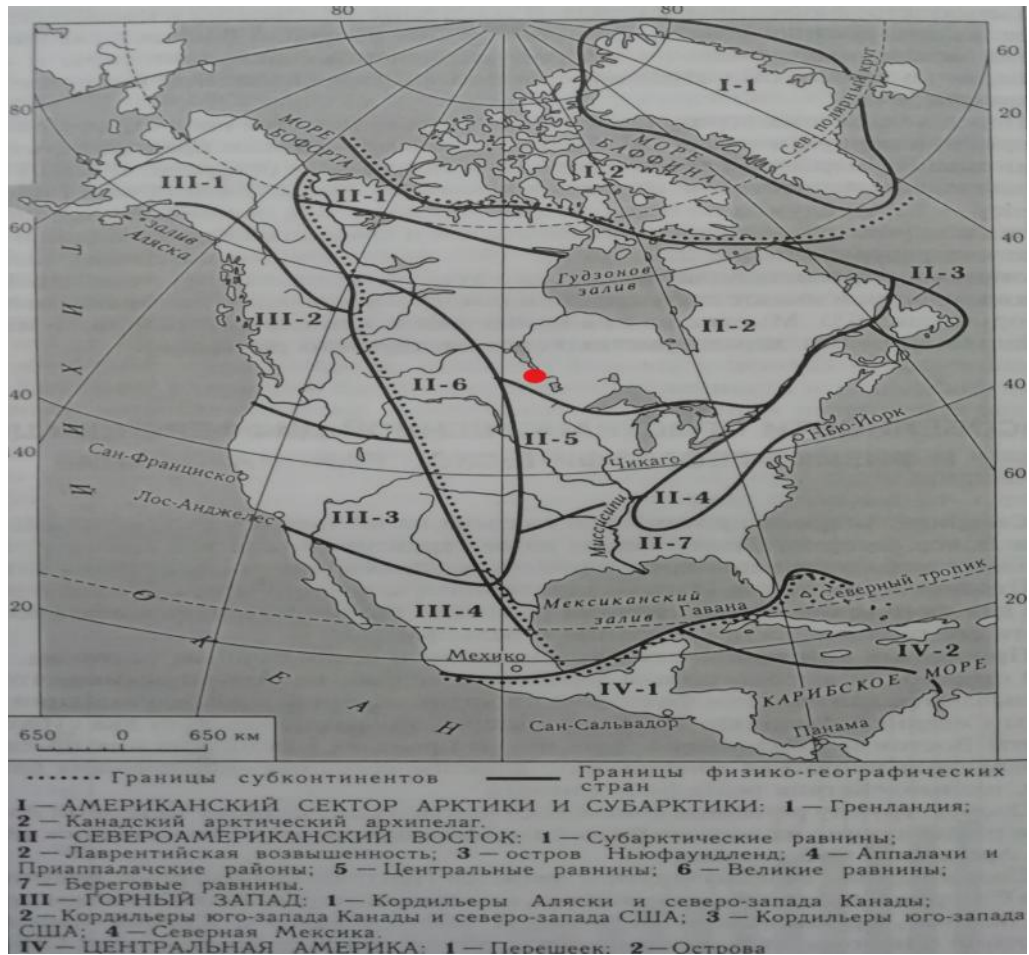
2400

(

). -

( .1.1).

.1.1



.1.1.

[9]



2.

200 500

1621 ( ).

1100 [21, c. 45].

3000

[7, c. 224].

1738

4200

6-7

[6, c.123].

[5, c. 144].

54,9 . 2,

2,75 . 2.

[8].

— ( ), 77°43' . . —

— ( ) 1°16' . . —

— ( ), 9°31' . . —

— ( ), 169°42' . . —

8 .

16 . .

[12, c. 87].

( - ( 8848 ).

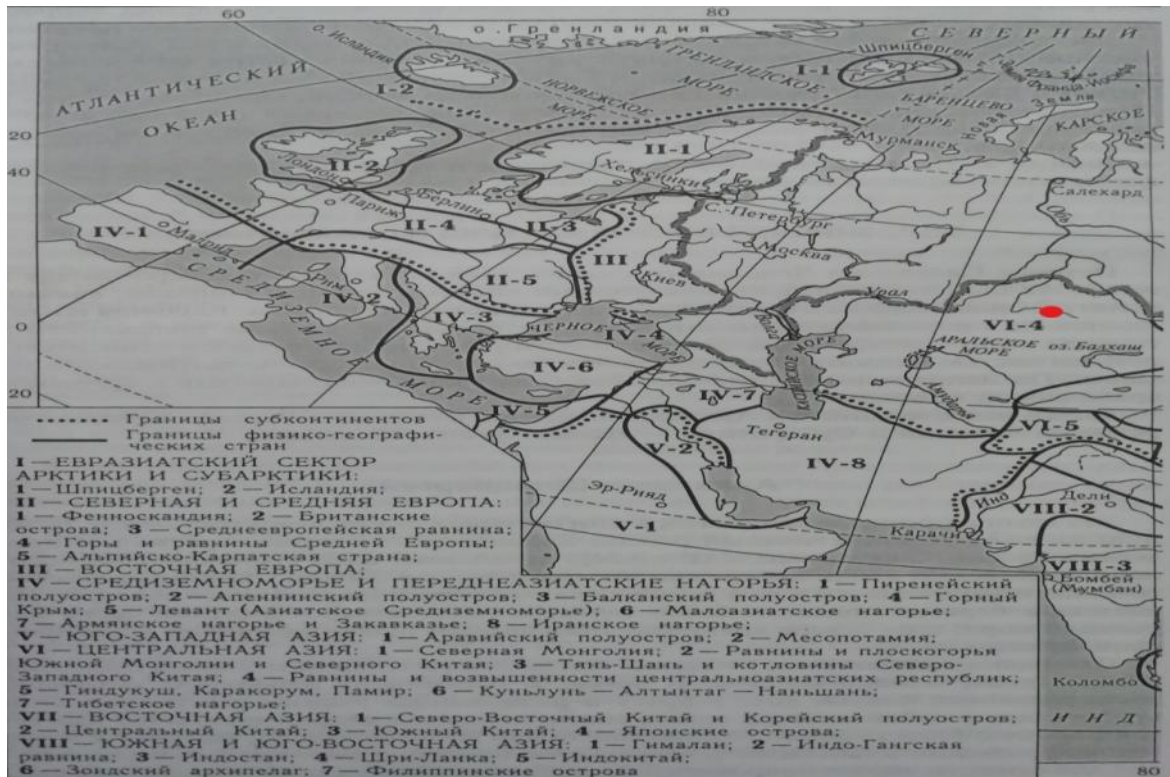
[20, с.

81].

[14, с. 160].

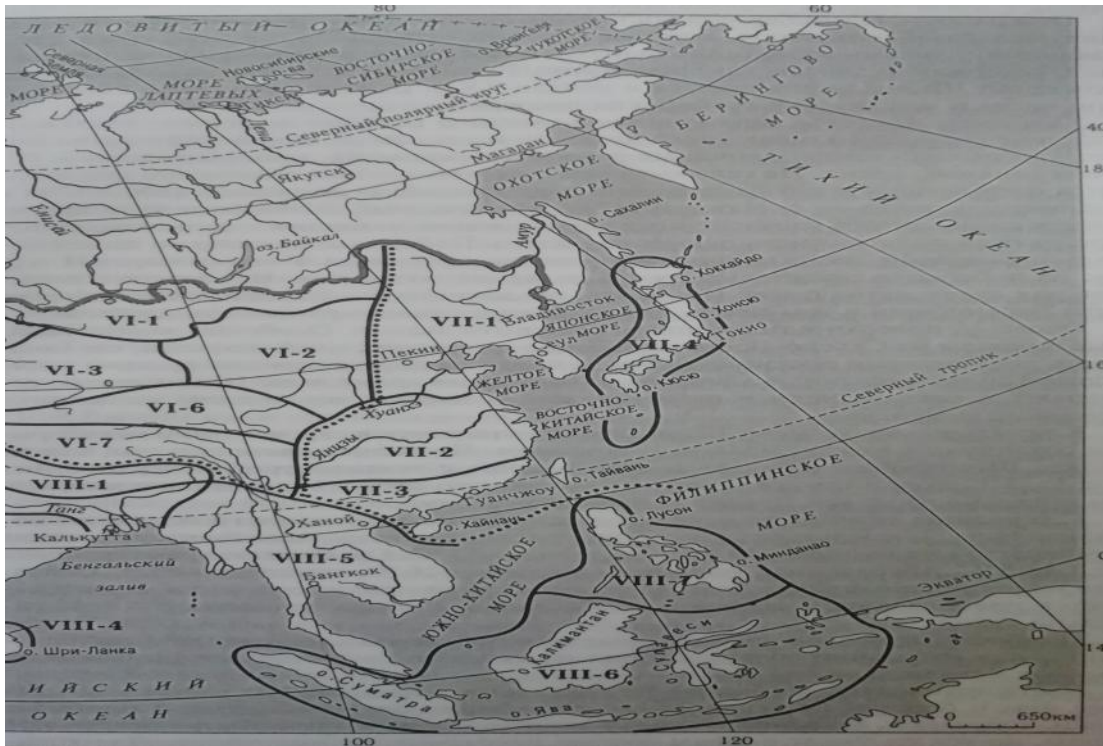
( .1.2).

.1.2



[21, с.118].

.1.3.



.1.3.

[8]

80 %.

[6, с. 156].

### 1.3

« »,

3350 / 2 (80  
/ 2) 7550 / 2 (180 / 2) -  
40° . .

[25].

. 40° . . . ( . ) .

, [19, c. 108].

30° . . . [15, c.487].

-36 ° -44 ° . +30 ° . -86 + 56.7 ° .

-44°

-35 ° .

0 °

20 ° ,

40 ° .

0 ° ,

-10 °

30 ° .

30-28° . .

, - ,  
 , ,  
 .  
 ,  
 ,  
 7 ( ).  
 -26 ° ,  
 -12 ° .  
 -50 ° .  
 60 -  
 70 . ,  
 ,  
 .  
 40 -50 .  
 ,  
 .  
 17 -18 ° ,  
 ,  
 13-14 ° .  
 10 -11° .  
 , .  
 .



: 2520 / 2 (60 / 2),  
 2940 5880 ( 70 140 / 2), -  
 — 5000-7570 (120-180 / 2),  
 8400-9240 (200-220 / 2).

50° . . .

( )

( ) 30° . . .

[15, c. 316].

).

-25...-30 ° ,

-55

+15...+20 ° .

[26, c. 219].

+30 ° .

400

( , , )

( , , ),

20...-25 ° ,

300 .

, .  
, .  
,  
 $-10 \dots -15^\circ$   $+5 \dots +10$ .  
,  $-25^\circ$  .  
, .  
,  
, .  
0° ,  
,  
1000 .  
- :  
, , .  
 $-45^\circ$  ,  
. ,  
 $+45^\circ$  .  
. 200 .  $35^\circ$  . . .  $50^\circ$  . . .  
, . - ,  
, .  
, ( 60 %).  
, .  
, ,  
 $+30^\circ$  ,  
.

150 , 300 , 100-

, , - , -

, - , . ,

, , . ,

, , . ,

, , . - ,

, . ,

+26...+27° ,

2000 .

- .

- , ,

150-300 .

,

+15,8° ,

+13,7° .

+0,4 ° .

+53° , - -

, -60° . ,

, . ,

, .

, - . ,  
- ,  
300-600 .  
-21 ° , +23 ° .  
+40 ° . ,  
-60 ° .  
+24 ° ,  
+43 ° . -13 ° .  
+10  
, -15,  
-35...-40 ° .  
+45 ° .

2

## 2.1

+ 2.4 ° ( .2.1) [18].

2.1

1985-2015 .<sup>1</sup>

, °C					
	., °C	., °C	., °C	., °C	°C
	7.8	-42.2	-13.2	-23.6	-18,3
	11.7	-45	-9.7	-20.6	-15,1
	23.3	-37.8	-1.8	-12.4	-7
	34.3	-26.3	9.8	-2.3	3,8
	37.0	-11.1	18.6	4.5	11,6
	37.8	-3.3	23.4	10.4	16,9
	37.8	1.1	26.1	13.4	19,8
	40.6	0.6	24.9	11.7	18,3
	38.8	-7.2	18.6	6.1	12,4
	30.5	-17.2	11.3	0.1	5,7
	23.9	-34	-0.4	-9.2	-4,7
	11.7	-37.8	-9.9	-19.4	-14,6
	40.6	-45	8.1	-3.4	2.4

, ,  
 , -  
 , ,  
 , .  
 ° , -23  
 -45 ° .  
 ,  
 .  
 -20.2° .  
 .  
 ° -7 ° +11.6 ° , + 12.4  
 ° -4.7 ° .  
 .  
 , 14  
 +30 °  
 , 2011,  
 40.6 ° .  
 .  
 +19.8 °C, +24.8 °C.  
 .  
 ,  
 , .  
 +3.5 ° [17].  
 ,  
 +5.2 ° .  
 .  
 9.9 ° .  
 -  
 -25 ° ...-30 ° .

1893 . (-51.6 ° ),

-40°

-14.8 °

( . 2.2).

2.2

1985-2015 .<sup>2</sup>

, °C					
	., °C	., °C	., °C	., °C	°C
	3.4	-51.6	-9.9	-18.3	-14.2
	4.8	-48.9	-9.2	-18.5	-14.1
	22.1	-38	-2.5	-11.5	-7.1
	29.7	-27.7	10.9	0.2	5.2
	35.7	-10.8	20.2	7.9	13.9
	40.1	-1.5	25.8	13.2	19.5
	41.6	2.3	26.8	15.0	20.8
	38.7	-2.2	25.2	12.8	18.8
	36.2	-8.2	18.8	6.6	12.3
	26.7	-25.3	10	0.2	4.6
	18.5	-39.2	-1.4	-8.9	-5.4
	4.5	-43.5	-8	-16.1	-12.1
	41.6	-51.6	8.9	-1.5	3.5

+10.9 ° ,

+13.9 ° .

+20.8 ° ,

1936 . -



+41.6 ° .

+4.6 ° ,

-25.3 °

1914 .

5-10 .

## 2.2

[13, c. 283].

83.8 ( . 2.3)

14.8 .

504.6 ,

23.1 ,

2

59.8 [4].

25 ,

1985-2015 .<sup>3</sup>

	16	19.3
	15	14.8
	18	23.1
	21	35.9
	35	59.8
	37	83.8
	50	72
	29	75.3
	22	51.3
	27	29.5
	28	21.2
	22	18.6
	320	504.6

320 ( . 2.3),

50

15 [3].

100%

2.4

1985-2015 .<sup>4</sup>

, %		
	78	74
	77	72
	79	76
	64	64
	54	64
	53	72
	59	72
	57	72
	59	74
	68	75
	80	80
	79	80
	67	73

72%

80%.

73% ( . 2.4) [4].

60%.

53% [3].

80%,

75%.

67% ( . 2.4).

### 2.3

35° 65°

[22, c.

195].

4.5 / ( . 2.5).

4.9 / .

3.7 / .

24%

16%.

11% [2].

2.5

1985-2015 .<sup>5</sup>

, /c		
	3.7	4.6
	3.9	4.6
	3.7	4.9
	3.7	4.8
	3.5	4.8
	3.1	3.9
	2.8	3.7
	2.8	4.2
	3.1	4.4
	3.5	4.6
	3.7	4.7
	3.8	4.7
	3.4	4.5

3.5 /c ( . 2.5).

2.8 /c

3.9 /c.

1 / ,

- 20%

18%.

6% [1].

[23, с.

268].

8

14

5  
66 8

[16, . 132].

2.6

1985-2015 .<sup>6</sup>

	0.9	12.7	17.3	9.9
	0.6	10.6	17	7.9
	1	11.6	18.4	10.1
	4.6	16.3	9.1	7.7
	7.5	17.5	6.1	11.5
	6.1	19.3	4.6	13.6
	9.4	19.9	1.7	11.7
	11.7	16.8	2.5	8.9
	9.7	14.6	5.7	8.3
	7.2	14.4	9.2	7.5
	2.9	12	15.1	8.2
	1.1	11.9	18	9.5

<sup>6</sup>

	62.7	177.6	124.7	114.8
--	------	-------	-------	-------

62.7

( . 2.6).

11.7

124.7

177.6

1.7 , 18.4

2.6

0.6

11.7

34.2

13.6 , 7.5 [2].

**2.7**

**1985 -2015 .<sup>7</sup>**

	2.8	10.9	17.3	9.7
	1.5	11.3	15.4	8.5
	1.5	8.5	20.9	8.9
	6.1	13.6	10.3	8.4
	8.5	17.5	5	10.7
	9.7	17	3.3	10.6
	7.8	18.7	4.5	13.8
	9	17	5	9.1
	9.4	14.3	6.4	6.5
	7.9	11.6	11.5	9
	3.4	8.6	17.8	10.2
	2.7	9.6	18.7	10.5
	70.3	158.6	136.1	115.9

<sup>7</sup>

1.5 ( . 2.7).

9.7 .

1.5 .

136.1 .

18,7 .

3.3 .

115.9 ,

32%.

13.8

, 6.5 [1].

4.8

( . 2.8).

5.8 .

3.8 [2].

2.8

, 1985-2015 .<sup>8</sup>

	3.8	7.2	4.1	5.2
	2.9	6.6	3.5	4.7
	3.4	6.5	4.0	5.0
	3.1	6.5	3.0	4.5
	3.2	6.5	3.5	4.9
	3.1	6.2	3.7	4.9
	3.5	6.3	2.6	3.8
	3.1	5.9	2.9	3.8
	3.1	6.0	3.1	4.3
	4.0	6.7	4.4	5.5
	4.8	7.2	4.4	5.5
	4.3	7.4	4.9	5.8
	3.5	6.6	3.7	4.8

<sup>8</sup>



6.6 , 3.5

( .2.8).

3

.

,

.

,

,

.

(22-28 )

(22-28 )

.

,

,

.

-

.

-

,

,

..

:

( , )

),

,

( , , )

),

.

( ).

.

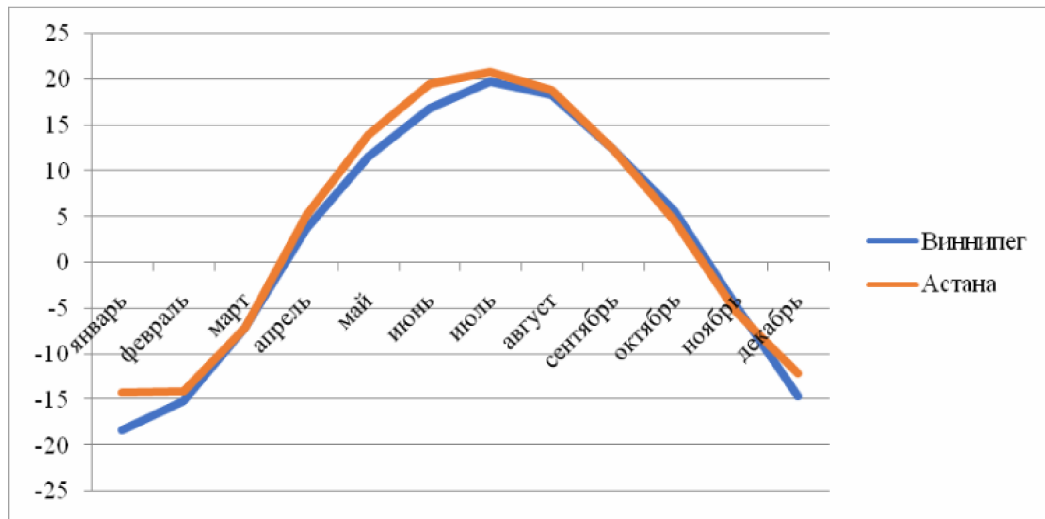
,

-

.

.

( . 3.1)



. 3.1.

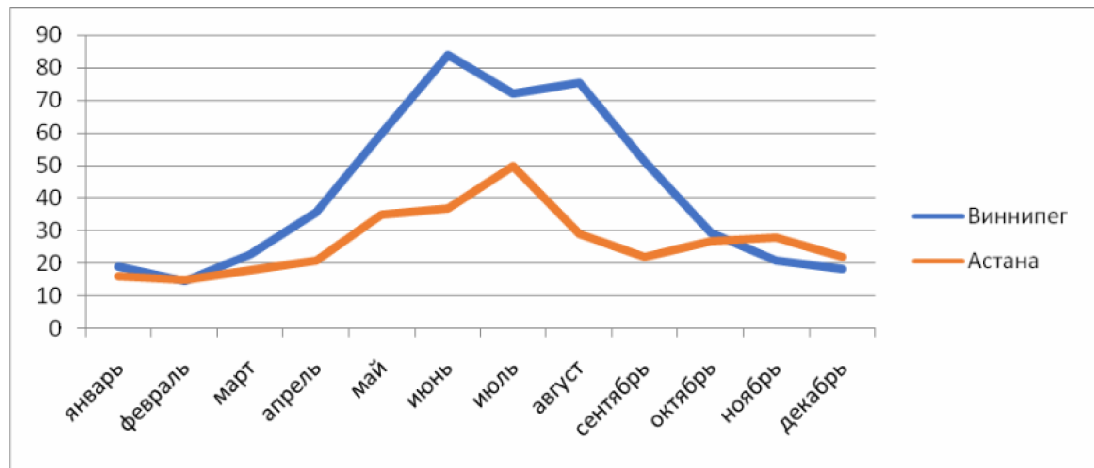
9

+3.5° (

).

+2.4° ,

-51.6° ,



. 3.2.

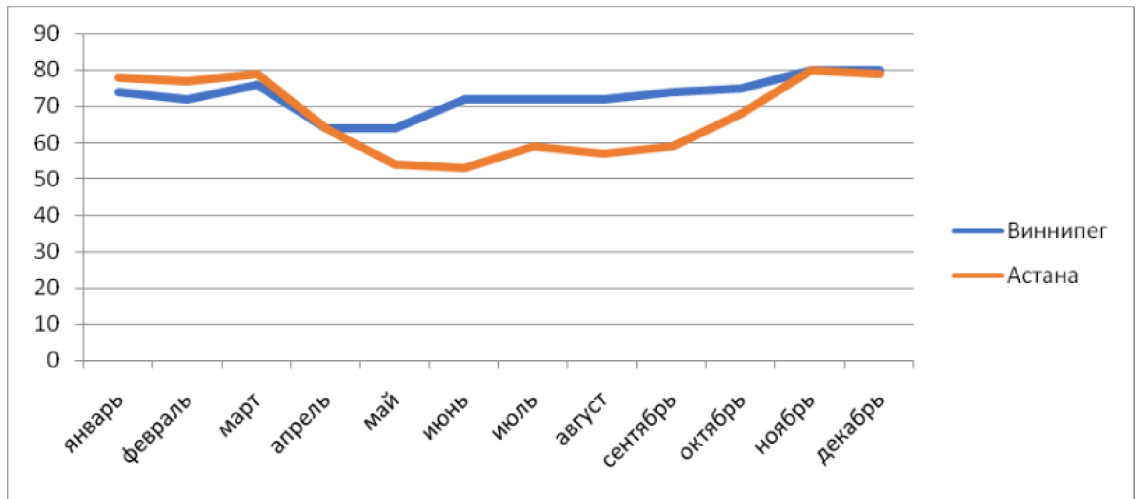
10

504 ,

1.5

320 ( . 3.2).

2



. 3.3

11

64-80% (.3.3).

,

80% 53%.

:

-

-

-

4.5 / .

:

-

-

80%

,

53% -

-

2.8 / c,

-

.

.

-

.

.

,

,

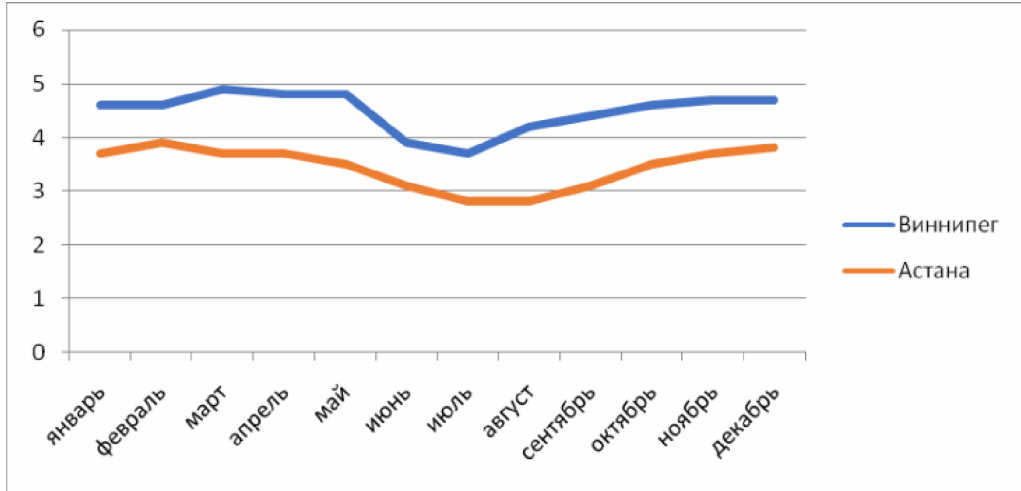
,

,

,

,

.



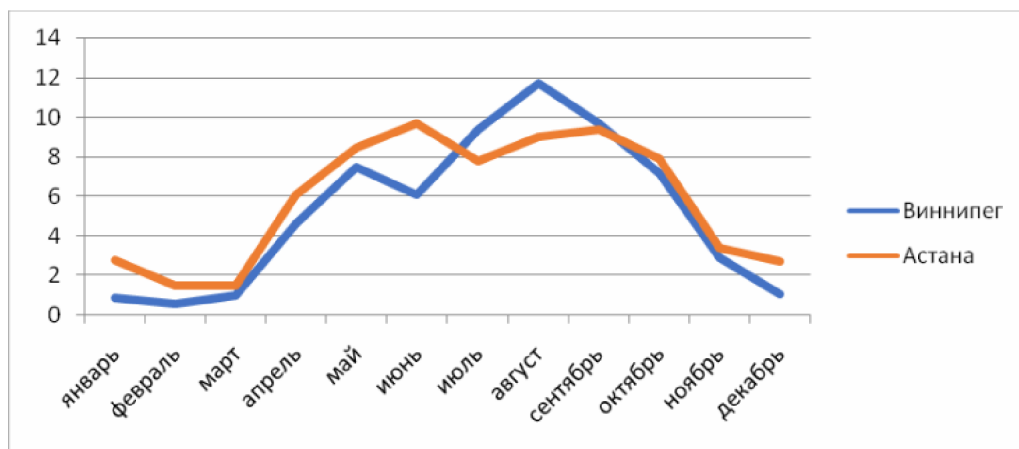
. 3.4

12

4.5 / ,

3.4 / . ( . 3.4).

70.3 ( . 3.5).



. 3.5.

- :
1. ( 47°11 58 . . 101°29 21 . . ).  
 ,  
 500 . .  
 705 .  
 430 - .
  2. ( 49°58 53 . . 97°07 39 . . ) -  
 , -  
 230 .  
 ,  
 .
  3. 40 .  
 , ( 50°42 45 . . 79°56 29 . . ).  
 ,
  4. ( 51°08 . . 71°26 . . )  
 , 570 . .  
 340  
 ,  
 , .
  5. ,  
 .  
 .



6.

1.5

7.

12%.

8.

9.

,

.

.

.

,

,

,

.

1. [ ]. URL:  
[https://www.meteoblue.com/ru/ / /modelclimate/ - \\_ \\_1526273 \( : 21.04.2019\)](https://www.meteoblue.com/ru/ / /modelclimate/ - _ _1526273 ( : 21.04.2019))
2. [ ]. URL:  
[https://www.meteoblue.com/ru/ / /modelclimate/ \\_ \\_6183235 \( : 21.04.2019\)](https://www.meteoblue.com/ru/ / /modelclimate/ _ _6183235 ( : 21.04.2019))
3. [ ]. URL:  
[http://www.pogodaiklimat.ru/weather.php?id=35188 \( : 23.04.2019\)](http://www.pogodaiklimat.ru/weather.php?id=35188 ( : 23.04.2019))
4. [ ]. URL:  
[http://www.pogodaiklimat.ru/weather.php?id=71579 \( : 23.04.2019\)](http://www.pogodaiklimat.ru/weather.php?id=71579 ( : 23.04.2019))
5. И. . . – .: , 1947. – 356 .
6. . ., . ., . ., . .  
( ). – .: , 1984. – 426 .
7. . ., . ., . .  
: . . . . .  
– .: « », 2007. – 638 .
8. [ ]. URL:  
[https://geographyofrussia.com/geograficheskaya-xarakteristika-evrazii/ \( : 22.04.2019\)](https://geographyofrussia.com/geograficheskaya-xarakteristika-evrazii/ ( : 22.04.2019))
9. [ ]  
]. URL: [https://geographyofrussia.com/geograficheskaya-xarakteristika-severnoj-ameriki/ \( : 22.04.2019\)](https://geographyofrussia.com/geograficheskaya-xarakteristika-severnoj-ameriki/ ( : 22.04.2019))
10. [ ]. URL:  
[https://ru.wikipedia.org/wiki/ # \\_ \( : 26.04.2019\)](https://ru.wikipedia.org/wiki/ # _ ( : 26.04.2019))

11. [ ]. URL:  
<http://batrachospermum.ru/2017/01/center-north-america-center/> ( : 26.04.2019)
12. . . . : . . . . . -  
 . . . . . , 2001. – 320 .
13. . . . . . - :  
 1989. – 568 .
14. B.C. . - : - . - , 1989. -  
 272 .
15. . . . . - : , 1977. -  
 711 .
16. . . . . - : , 1978. – 241 .
17. [ ]. URL:  
<https://ru.wikipedia.org/wiki/> - - ( :  
 28.04.2019)
18. [ ]. URL:  
<https://ru.wikipedia.org/wiki/> # - - ( :  
 28.04.2019)
19. . . . . I. . -  
 . . . . . , 1998. – 342 .
20. . . . . - :  
 1978. – 191 .
21. . . . - . - : -  
 , 1985. – 184 .
22. . . . . , . . . . .  
 : . - / : , 2005. -  
 331 .
23. : . . . . . /  
 . . . . . - 3- ., . - : « »,

2007. – 416 .

24. [ ]. URL:  
<https://ru.wikipedia.org/wiki/> – ( :  
26.04.2019)
25. [ ]. URL:  
<https://geographyofrussia.com/klimatoobrazuyushhie-factory-2> ( :  
28.04.2019)
26. . . . – . : ,  
1972. – 394 .